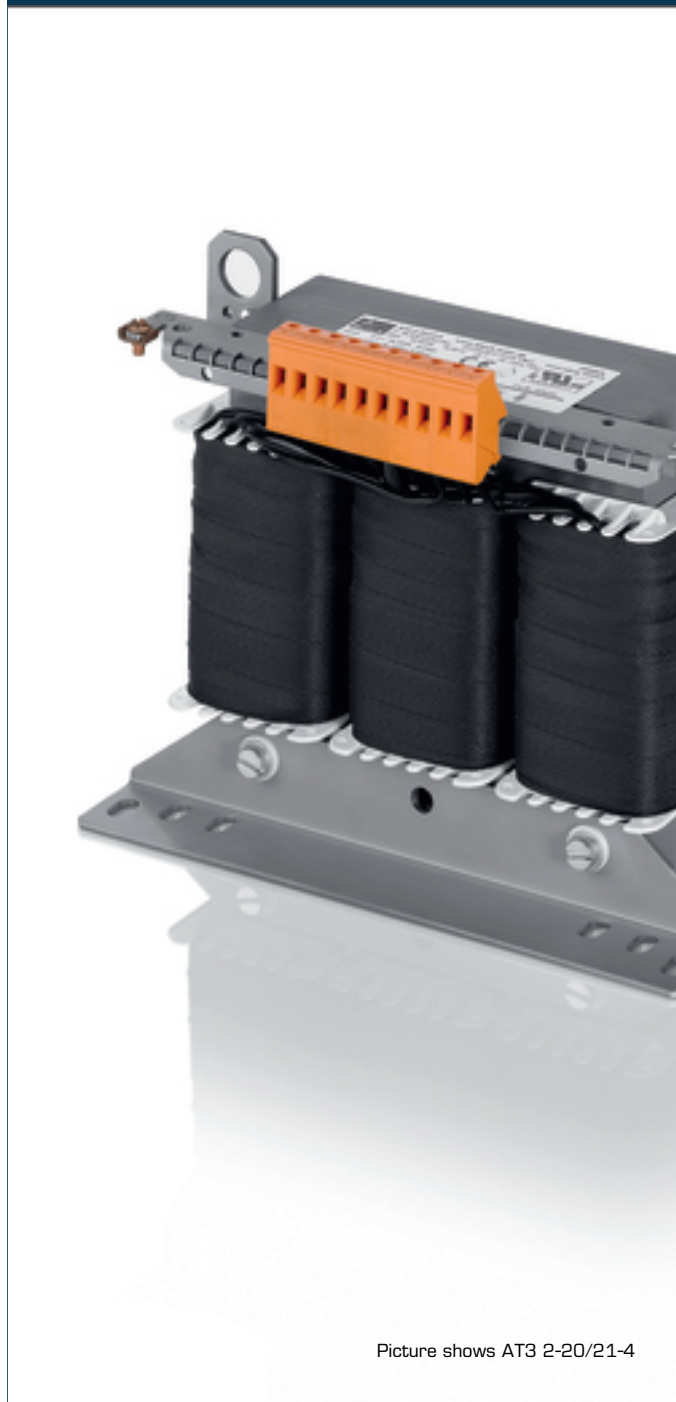


# Autotransformer AT3 160-44/46-4



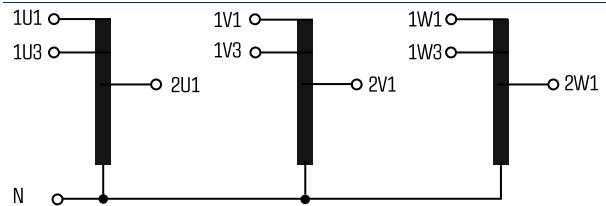
## Advantages

Low weight and small size (compared to isolating transformers)
Very high efficiency
Patented assembly technology to lower heat losses
Very good corrosion protection and low noise thanks to vacuum impregnation
Fixed, contact protected screw connection terminals complying with UVV BGV A3
Multifunctional fixing rails with 12 oval slots
Enlarged fixing rail for easy installation from above
Integrated crane eyes

## Applications

Autotransformer for adjustment of the voltage on the input and output sides with no requirement for electrical isolation.

## Sample application



## Standards

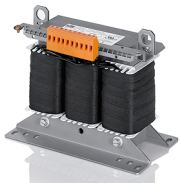


Autotransformer  
to: VDE 0570 Teil 2-13, DIN EN 61558-2-13, EN 61558-2-13,  
IEC 61558-2-13, UL 5085-1/-2, CSA 22.2 No.66

## Approvals



UL 5085-1/-2, CSA 22.2 No.66



# Autotransformer AT3 160-44/46-4

Electrical data	
<b>Type</b>	
AT3 160-44/46-4	
<b>Input</b>	
Rated input voltage	3 x 440/460 Vac
Rated frequency	50 - 60 Hz
<b>Output</b>	
Rated output voltage	3 x 400 Vac
Rated Power	160.000 VA
Vector group	YNΔ0
Efficiency	96.0 %
<b>Approvals</b>	
Approvals	cURus
<b>Environment</b>	
Ambient temperature max.	40 °C
<b>Safety and protection</b>	
Type	Open type
Insulation class	F
Protection index	IP 00
Safety class (prepared)	I
Short circuit strength	non-short-circuit proof
Test voltage	4000 Vac, 50 Hz
<b>Order numbers</b>	
Recommended enclosure	BGE-085
<b>Order Number</b>	<b>AT3 160-44/46-4</b>

Mechanical data	
<b>Type</b>	
AT3 160-44/46-4	
<b>Terminal and mounting</b>	
Fixing method	Fixing rail
Fixing screws	M12
Terminals	Screw-type terminals
<b>Measures and weights</b>	
Core type	3 UI 240/110
Weight	166.0 kg

